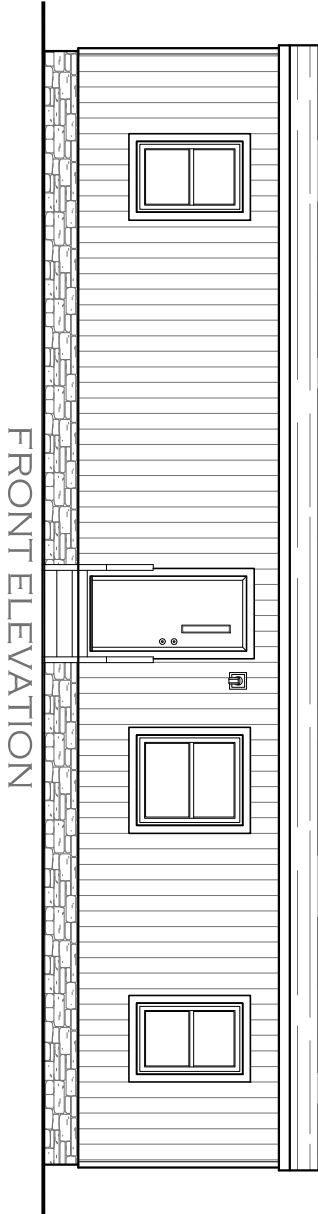
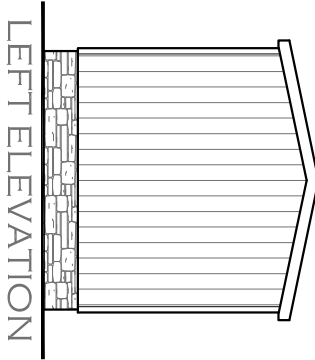


SHEET NO. EX-1.	SHEET NAME EXTERIOR ELEVATION	PLAN NO. TRU-1248-21-2	SCALE 3/16"=1'	DATE PRINTED 4/9/2026	DATE DRAWN 1/23/2026	DRAWN BY Jeremy Hurling	MODEL NAME	REVISION	DATE
							Tulip		
							MODEL NO. TRT12482P		
							BOX SIZE 12' x 48'	MODEL SQ. FT. 544	

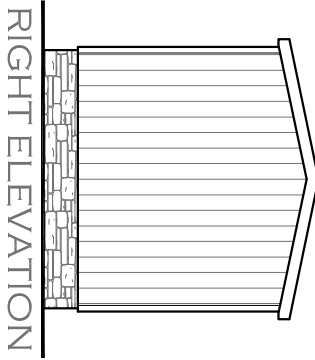




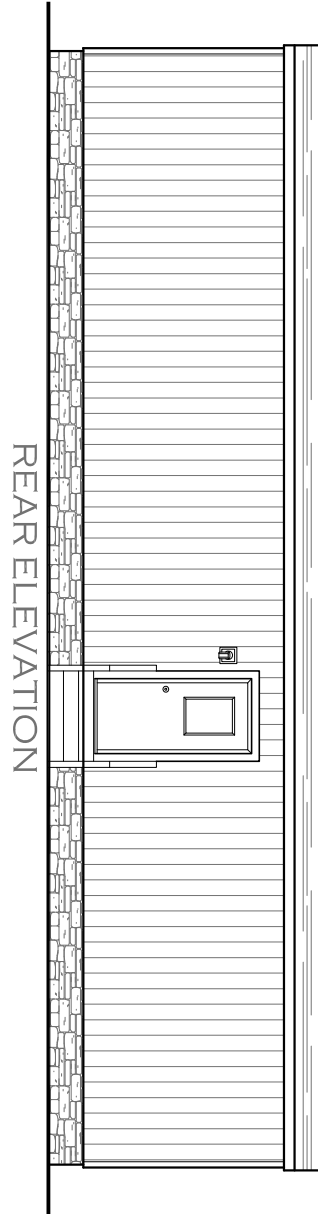
FRONT ELEVATION



LEFT ELEVATION



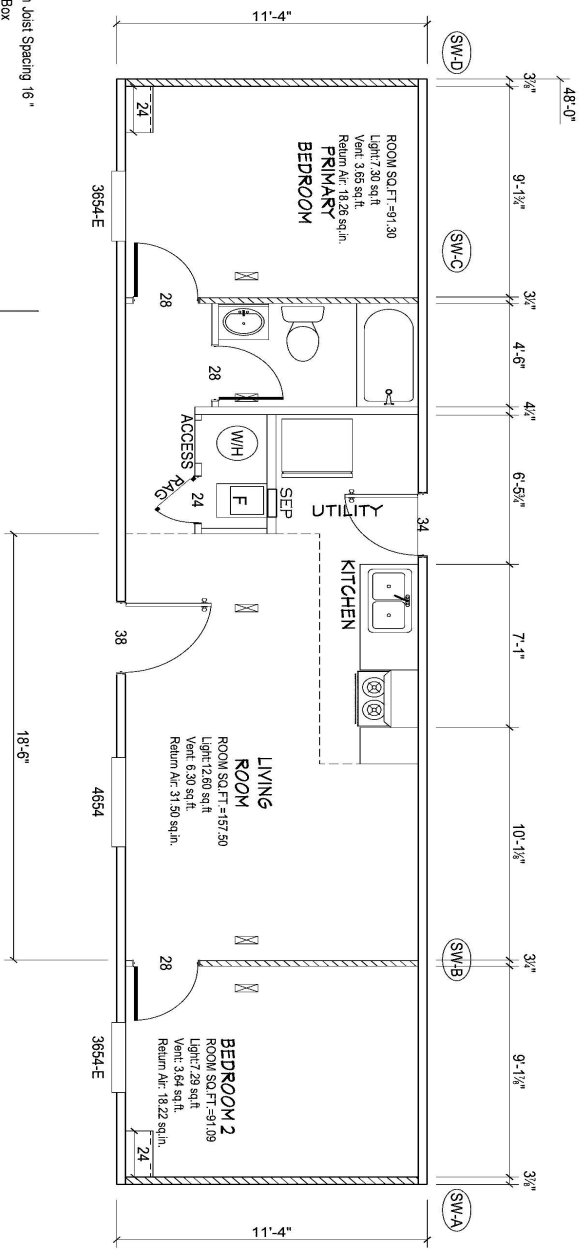
RIGHT ELEVATION



REAR ELEVATION

SHEET NO. EX-2.	SHEET NAME EXTERIOR ELEVATION	PLAN NO. TRU-1248-21-2	SCALE 3/16"=1'	DATE PRINTED 4/9/2026	DATE DRAWN 1/23/2026	DRAWN BY Jeremy Hulting	MODEL NAME	REVISION	DATE
							Tulip		
							MODEL NO. TRT12482P		
							BOX SIZE 12' x 48'	MODEL SQ. FT. 544	





Model # TRU-1248-21-2
 Box Width = 136" Single wide
 Box Length = 48 ft. 99.5" 10" MIN. I.B.E.A.M. No Cleverstory
 No Skylights No Original Dorrner
 No Porches No Sunken Floor
 Joist Size = #2 sp 2x6 Lags 9Mx3" No Parapet Roof

Version R14.02

Wind Zone 1 Standard Roof
 7/16" Rated Sheathing and Ceiling Board with 15
 ga staple @ 6/12 (266, 315) Chords 7 2x4 SPF
 #3 Top Plate spliced w/2x4 MCP & 2x3 SPF Rail
 spliced w/ 2x4 MCP
 96.25 inch sidewall

Diaphragm Construction:

Shearwall Dist./ Hitch	Length	PLF	# of Joists	Lags	Notes
A	0"	104"	2	2/1	
D	48"	104"	2	2/1	

Wind Zone 2 Standard Roof
 7/16" Rated Sheathing and Ceiling Board with 15
 ga staple @ 6/12 (266, 315) Chords 7 2x4 SPF
 #3 Top Plate spliced w/2x4 MCP & 2x3 SPF Rail
 spliced w/ 2x4 MCP
 96.25 inch sidewall

Diaphragm Construction:

Shearwall Dist./ Hitch	Length	PLF	# of Joists	Lags	Notes
A	0"	104"	2	2/1	
B	9.6"	88"	430	5	3/1
C	38.38"	88"	430	5	3/1
D	48"	104"	2	2/1	

Wind Zone 3 Standard Roof
 7/16" Rated Sheathing and Ceiling Board with 15
 ga staple @ 6/12 (266, 315) Chords 7 2x4 SPF
 #3 Top Plate spliced w/2x4 MCP & 2x3 SPF Rail
 spliced w/ 2x4 MCP
 96.25 inch sidewall

Diaphragm Construction:

Shearwall Dist./ Hitch	Length	PLF	# of Joists	Lags	Notes
A	0"	104"	2	2/1	
B	9.6"	88"	520	7	4/1
C	38.38"	88"	520	7	4/1
D	48"	104"	2	2/1	

ALL EXTERIOR DOORS ARE GREATER THAN 12 FT. CENTER TO CENTER
 TRU-1248-21-2.1

APPROVED BY
NPA INC.
 4/8/2026
 FEDERAL REGISTERED ENGINEER
 CONSTRUCTION AND SAFETY STANDARDS

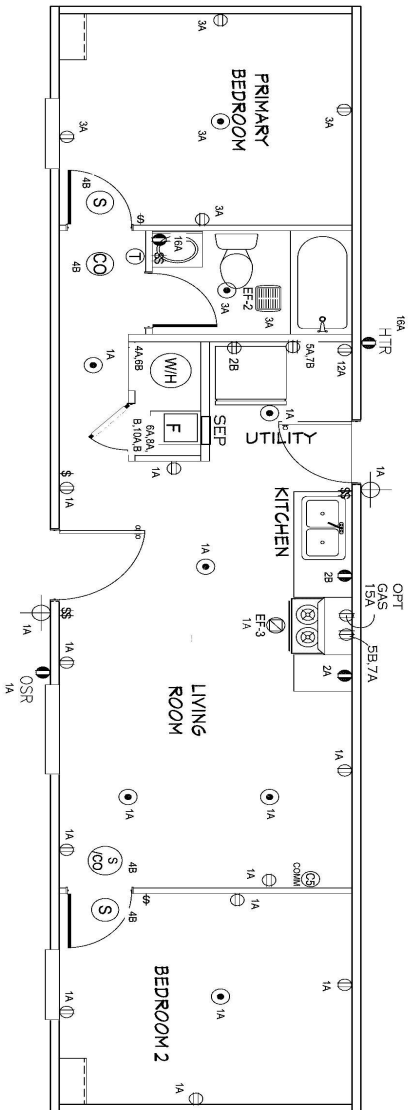
REVISIED

THIRD PARTY SEAL

DATE PRINTED 4/6/2026	DATE DRAWN 1/23/2026	MODEL NAME Tulip	MODEL NO. TRT12482P	MODEL SQ. FT. 544
SCALE 3/16"=1'	PLANNING TRU-1248-21-2	DRAWN BY Jeremy Hulting	BOX SIZE 12' x 48'	
SHEET NAME FLOOR PLAN	SHEET NO. FP-1.			

REVISION	DATE





- NOTES
1. ALL CIRCUITS SHOWN ARE FOR REFERENCE AND MAY BE CHANGED BASED ON OPTIONAL COMPONENTS INSTALLED IN THE HOME.
 2. REFER TO DAPA MANUAL FOR SYMBOL CHART
 3. EITHER LIGHT OR RECEPTACLE MUST CONNECT TO SWITCH
 4. EF-1: 80 CFM EXHAUST FAN REQUIRED FOR THERMAL ZONE II OPENABLE GLASS.
 5. EF-2: 80 CFM EXHAUST FAN REQUIRED THERMAL ZONE II, AND III.
 6. EF-3: 100 CFM RANGE EXHAUST FAN SWITCH AT HOOD.
 7. EF-4: WHOLE HOUSE VENTILATION REQUIREMENTS PER DAPA MANUAL.
 8. REFER TO DAPA MANUAL OR THE MFG. INSTALLATION INSTRUCTIONS FOR PROPER WIRE SIZE AND BREAKER SIZE FOR SPECIFIC APPLIANCE AND MODEL BEING INSTALLED.
 9. ALL SMOKE ALARMS TO BE LOCATED ON THE CEILING.
 10. CARBON MONOXIDE ALARMS ARE ONLY REQUIRED WHEN HOME HAS EITHER FUEL BURNING APPLIANCES, IS GARAGE READY OR IS PASSENGER VEHICLE. REFER TO DAPA MANUAL FOR ADDITIONAL INFORMATION.
 11. DIMENSIONS SHOWN ON PRINT ARE APPROXIMATE AND TO BE USED ONLY AS A GUIDE LINE.

CIRCUIT	CIRCUIT #	WIRE	BREAKER	CIRCUIT	CIRCUIT #	WIRE	BREAKER	CIRCUIT	CIRCUIT #	WIRE	BREAKER
LIGHT/RECP	1A, 3A, 13B, 14A	14-2	15-SP	DRYER	5A, 7B	SEE NOTE #8		BATHROOM	16A	12-2	20-SP
LIGHT/RECP	1B, 3B, 14B	14-2	15-SP	WATER HEATER	4A, 6B	SEE NOTE #8		OPT GRID/SP	9B	SEE NOTE #8	
KITCHEN	2A, 2B	12-2	20-SP	RANGE	5B, 7A	SEE NOTE #8		OPT SP/W VPL/AC	11A, B	SEE NOTE #8	
WASHER	12A	12-2	20-SP	FURNACE	6A, 8A, B, 10A, B	SEE NOTE #8		FREEZER	13A	SEE NOTE #8	
RANG HOOD/ MICROVAE	15B	SEE NOTE #8		OPT DWASH	9A	SEE NOTE #8		OPT ELEC FIREPLACE	16B	SEE NOTE #8	
OPT GAS/RANG	15A	SEE NOTE #8		SMOKE/CO DETC	4B	SEE NOTE #8					
				REFER	12B	SEE NOTE #8					

TRU-1248-21-2.2

APPROVED BY

 REVISIONS
 4/8/2026
 FEDERAL REGISTERED ELECTRICAL ENGINEER
 CONSTRUCTION AND SAFETY STANDARDS

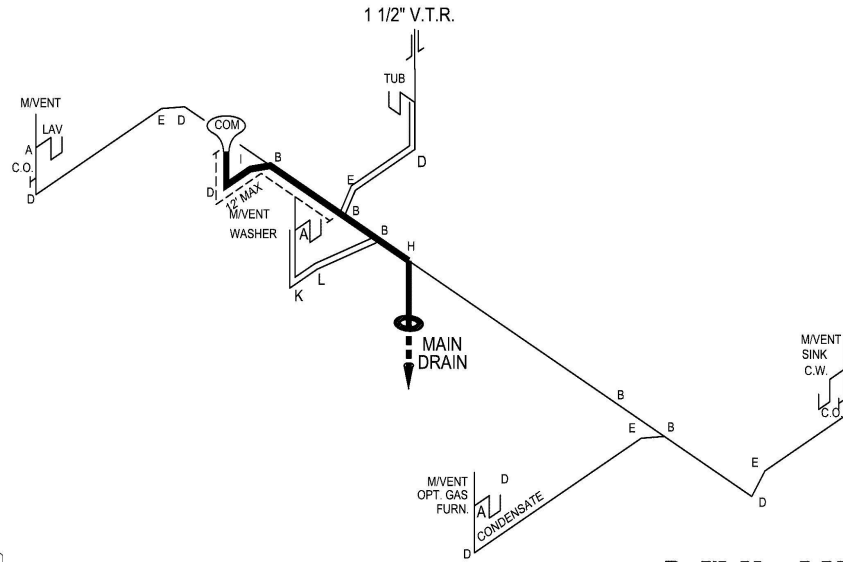
MODEL NAME Tulip	MODEL NO. TRT12482P	MODEL SQ. FT. 544
DRAWN BY Jeremy Huiting	DATE DRAWN 1/23/2026	DATE PRINTED 4/6/2026
SCALE 3/16" = 1'	PLANNING TRU-1248-21-2	SHEET NAME ELEC. PLAN
SHEET NO. EL-1.		

REVISION	DATE

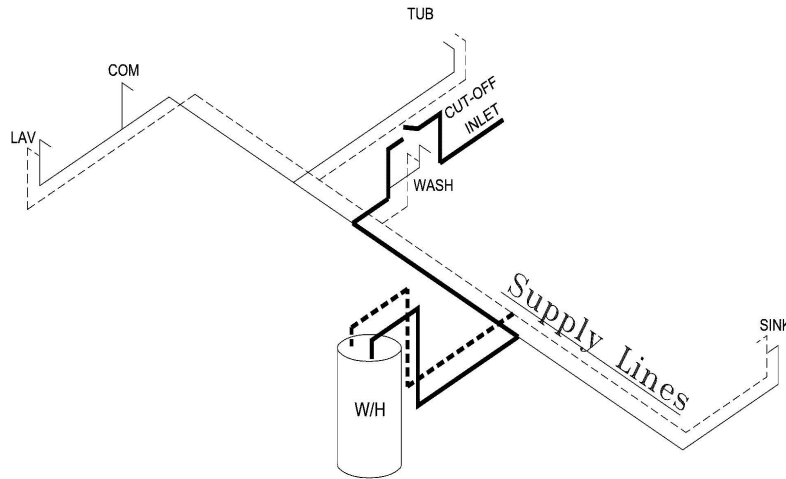


NOTE:
DASHED LINES INDICATE HOT WATER
SOLID LINES INDICATE COLD WATER

— = 3/4"
— = 1/2"



D.W.V. LINES



LEGEND	
A	SHORT TURN T-Y
B	LONG TURN T-Y
C	1/4 BEND
D	LONG SWEEP 1/4 BEND
E	45 ELL
F	DBL. SANITARY TEE
G	4x3 CLOSET ELL
H	DOUBLE ELL
I	22 1/2° ELL
J	45° Y
K	LONG TURN STREET ELBOW
L	45 FTG ELL

DWV LINE SIZE CHART	
—	= 3"
—	= 2"
—	= 1 1/2"



REVISION	DATE

MODEL NAME	Tulip
MODEL NO.	TRT12482P
BOX SIZE	12' x 48'
MODEL SQ. FT.	544

DRAWN BY
Jeremy Huiting

DATE DRAWN
1/23/2026

DATE PRINTED
4/6/2026

SCALE
3/16"=1'

PLAN NO.
TRU-1248-21-2

SHEET NAME
D.W.V. & SUPPLY

SHEET NO.
PL-1.

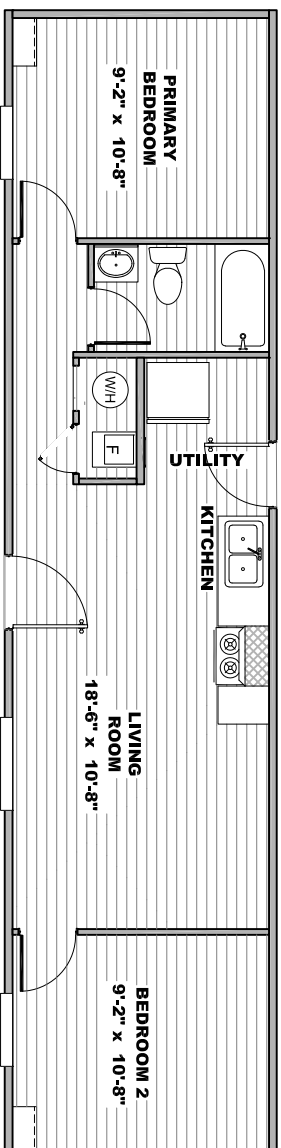
TRU-1248-21-2.3

APPROVED BY
NIA INC.
FEDERAL MANUFACTURED HOME
CONSTRUCTION AND SAFETY STANDARDS

REVISED
4/8/2026

THIRD PARTY SEAL

"12 x 48 Tulip"

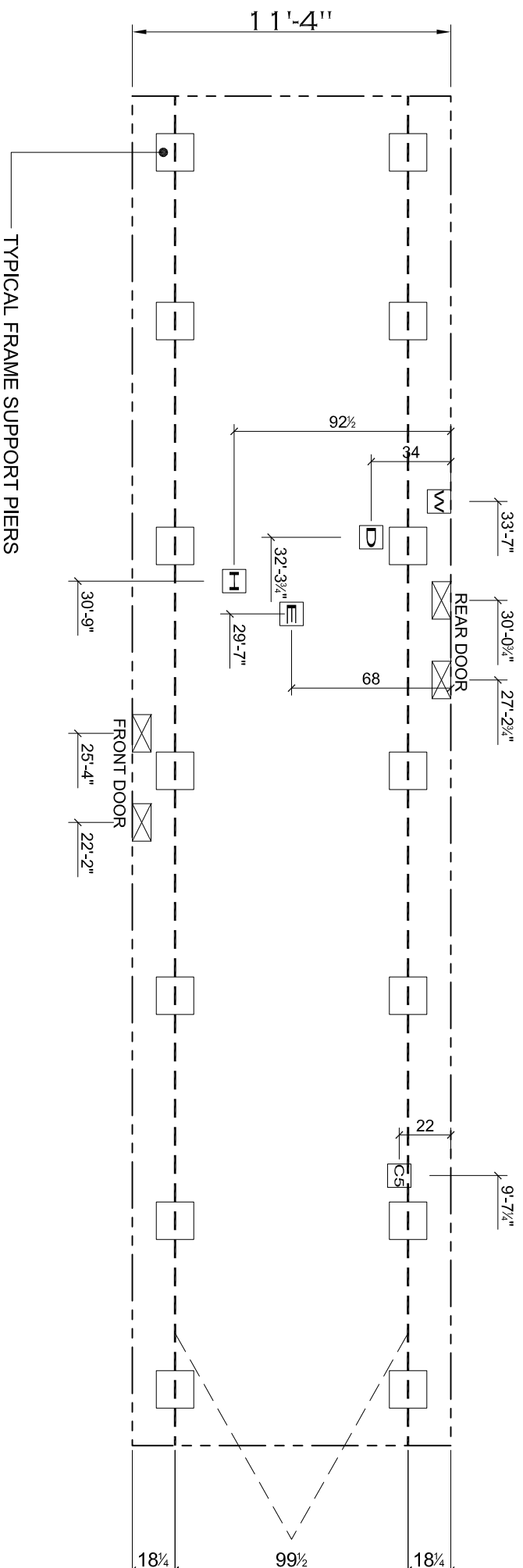


MODEL #TRT12482B SQ.FT. 544

DRAWING # TRU-1248-21-2

20 lb ROOF LOAD SIDEWALL OPENING PIER LOAD 14' BOX WIDTH	SIDEWALL OPENING (FT)					
	3	4	5	6	8	10
	1175	1330	1485	1640	1950	2260

*FOR 30 lb & 40 lb ROOF LOAD REFER TO TABLES 7 & 7a IN THE INSTALLATION MANUAL.



NOTES:

- REFER TO TABLES 6 AND 6a IN THE INSTALLATION MANUAL FOR LOAD ON FRAME PIER FOOTINGS FOR HOMES THAT DO NOT REQUIRE PERIMETER BLOCKING. REFER TO TABLES 7 AND 7a IN THE INSTALLATION MANUAL FOR LOAD ON FRAME PIER FOOTINGS FOR HOMES THAT REQUIRE PERIMETER BLOCKING. REFER TO TABLES 10 AND 10a TO DETERMINE FOOTING SIZE FOR ALL PIERS.
- REFER TO TABLE 9 FOR PIER CONFIGURATION AND MAXIMUM ALLOWABLE HEIGHTS. CROSS REFERENCE THE PIER HEIGHT WITH THE MAXIMUM ALLOWABLE FLOOR HEIGHT LISTED IN THE FRAME TIEDOWN CHARTS (TABLE 18, 19, AND 20).
- THE MAXIMUM SPACING FOR FRAME SUPPORT PIERS FOR 8" I-BEAMS IS 8 FEET, 10" & 12" I-BEAMS IS 10 FEET. APPROXIMATE.
- FLOOR WIDTH SHOWN IS FOR STANDARD PRODUCT ONLY. CONTACT THE MFG FACILITY FOR SPECIFICATIONS OF OPTIONS ORDERED.

SERVICE DROP LEGEND

- E** = ELECTRICAL DROP
- W** = WATER INLET
- D** = DWV/PLUMBING DROP
- G** = GAS INLET
- H** = HVAC DROP
- CS** = COMMUNICATIONS DROP
- EX** = ELECTRICAL CROSSOVER
- WX** = WATER CROSSOVER
- HX** = HVAC CROSSOVER

PIER LEGEND

- = PIER MAIN BEAM
- = PIER PERIMETER
- = PIER PORCH/RECESSED ENTRY



REVISION	DATE

MODEL NAME Tulip	
MODEL NO. TRT12482P	
BOX SIZE 12' x 48'	MODEL SQ. FT. 544

DRAWN BY
Jeremy Huiting

DATE DRAWN
1/23/2026

DATE PRINTED
4/9/2026

SCALE
3/16"=1'

PLAN NO.
TRU-1248-21-2

SHEET NAME
PIERS

SHEET NO.
SU-1.