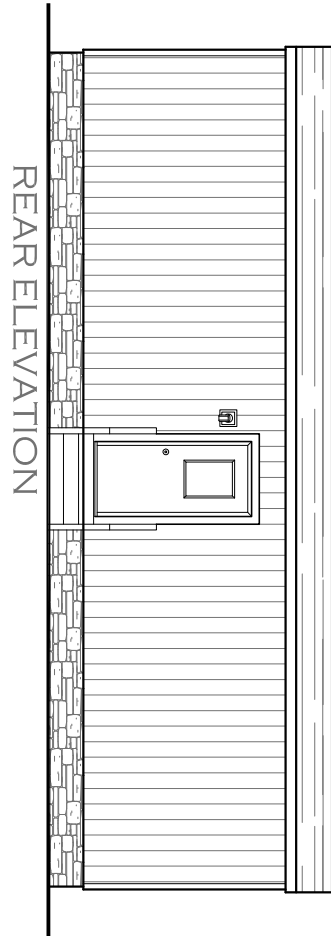
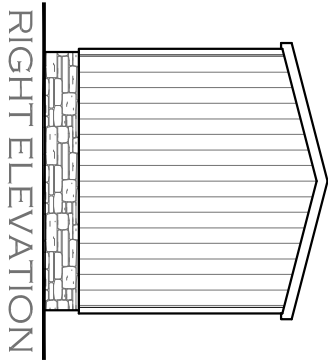
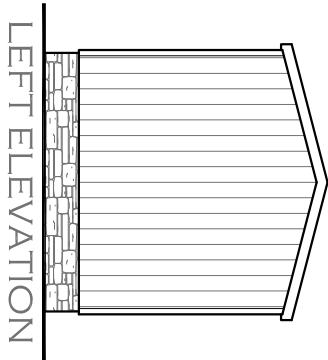
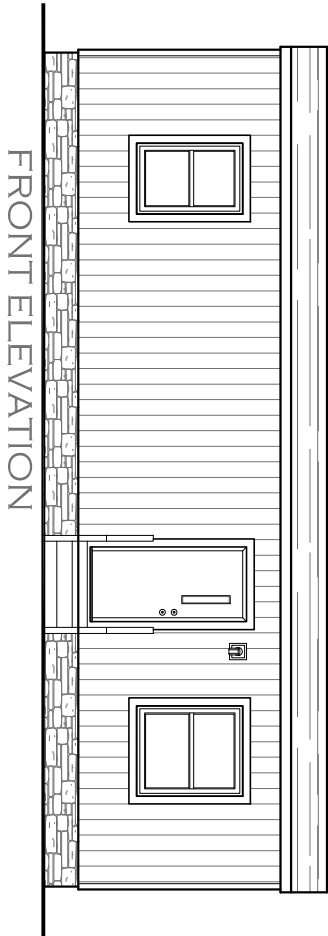


SHEET NO. <b>EX-1.</b>	SHEET NAME <b>EXTERIOR ELEVATION</b>	PLAN NO. TRU-1236-1-1	SCALE 3/16"=1'	DATE PRINTED 4/9/2026	DATE DRAWN 2/14/2026	DRAWN BY Jeremy Hulting	MODEL NAME	REVISION	DATE
							Buttercup		
							MODEL NO. TRT12361P		
							BOX SIZE 12' x 36'	MODEL SQ. FT. 408	





SHEET NO. <b>EX-2.</b>	SHEET NAME <b>EXTERIOR ELEVATION</b>	PLAN NO. TRU-1236-1-1	SCALE <b>3/16"=1'</b>	DATE PRINTED <b>4/9/2026</b>	DATE DRAWN <b>2/14/2026</b>	DRAWN BY <b>Jeremy Hurling</b>	MODEL NAME	REVISION	DATE	
							<b>Buttercup</b>			
							MODEL NO.			
							<b>TRT12361P</b>			
							BOX SIZE	MODEL SQ. FT.		
							<b>12' x 36'</b>	<b>408</b>		

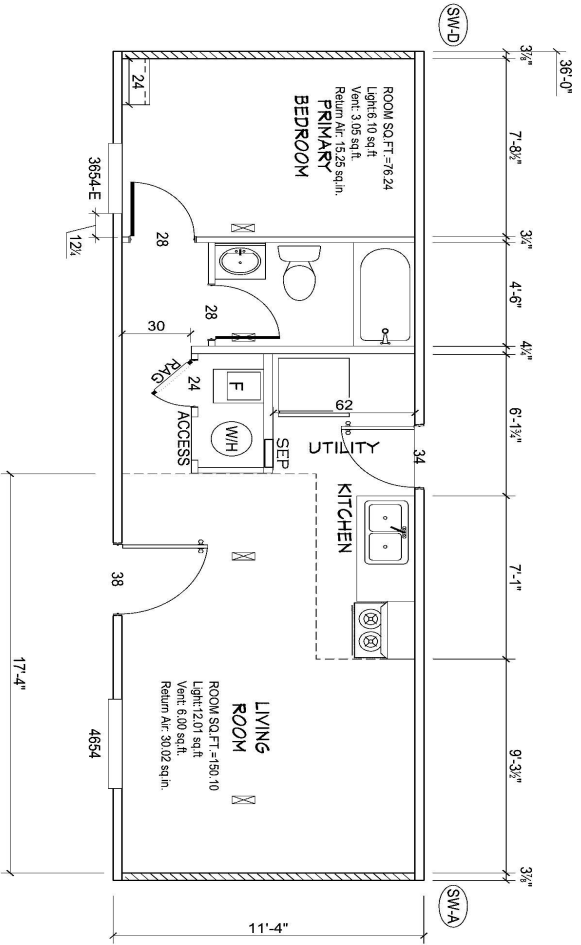


**Model # TRU-1236-11-1**  
 Box Width = 136" Single wide  
 Box Length = 36 ft. 99.5" 10" MIN. IBEAM No Offset Box  
 No Skylights No Original Dormer  
 No Porches No Sunken Floor  
 Joist Size = #2 sp 2x6 Lags 9Wx3" No Parapet Roof

Minimum Joist Spacing 16"

**Version R14.02**

Wind Zone	Standard Roof	7/16" Rated Sheathing and Ceiling Board with 15 ga staple @ 6/12 (286 3/15) Chords, 7 2x4 SPF #3 Top Plate spliced w/2x4 MCP & 2x3 SPF Rail	96 25 inch sidewall
Diaphragm Construction:			
Shearwall	Dist./Hitch	Length	PLF # of Joists Lags Notes
A	0"	104"	2 2/1
D	36"	104"	2 2/1
Wind Zone 2 Standard Roof			
7/16" Rated Sheathing and Ceiling Board with 15 ga staple @ 6/12 (286 3/15) Chords, 7 2x4 SPF #3 Top Plate spliced w/2x4 MCP & 2x3 SPF Rail			
96 25 inch sidewall			
Diaphragm Construction:			
Shearwall	Dist./Hitch	Length	PLF # of Joists Lags Notes
A	0"	104"	2 3/2
D	36"	104"	2 3/2
Wind Zone 3 Standard Roof			
7/16" Rated Sheathing and Ceiling Board with 15 ga staple @ 6/12 (286 3/15) Chords, 7 2x4 SPF #3 Top Plate spliced w/2x4 MCP & 2x3 SPF Rail			
96 25 inch sidewall			
Diaphragm Construction:			
Shearwall	Dist./Hitch	Length	PLF # of Joists Lags Notes
A	0"	120"	2 4/2
D	36"	120"	2 4/2



ALL EXTERIOR DOORS ARE GREATER THAN 12 FT. CENTER TO CENTER

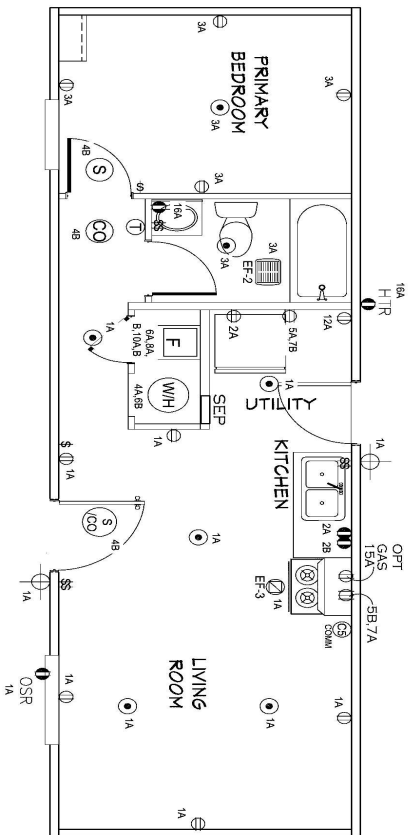
TRU-1236-11-1.1

APPROVED BY  
**NIP INC.**  
 4/8/2026  
 FEDERAL MANUFACTURED HOME  
 CONSTRUCTION AND SAFETY STANDARDS

MODEL NAME	Buttercup
MODEL NO.	TRT12361P
BOX SIZE	12' x 36'
MODEL SQ. FT.	408
DRAWN BY	Jeremy Huiting
DATE DRAWN	2/14/2026
DATE PRINTED	4/6/2026
SCALE	3/16" = 1'
PLAN NO.	TRU-1236-11-1
SHEET NAME	FLOOR PLAN
SHEET NO.	FP-1.

REVISION	DATE





- NOTES
1. ALL CIRCUITS SHOW ARE FOR REFERENCE AND MAY BE CHANGED BASED ON OPTIONAL COMPONENTS INSTALLED IN THE HOME.
  2. REFER TO DAPA MANUAL FOR SYMBOL CHART
  3. EITHER LIGHT OR RECEPTACLE MUST CONNECT TO SWITCH.
  4. EF-1- 80 CFM EXHAUST FAN REQUIRED FOR THERMAL ZONE III OPENABLE GLASS.
  5. EF-2- 80 CFM EXHAUST FAN REQUIRED THERMAL ZONE I, II, AND III.
  6. EF-3- 100 CFM RANGE EXHAUST FAN SWITCH AT HOOD.
  7. EF-4- WHOLE HOUSE VENTILATION REQUIREMENTS PER DAPA MANUAL.
  8. REFER TO DAPA MANUAL OR THE MFG. INSTALLATION INSTRUCTIONS FOR PROPER WIRE SIZE AND BREAKER SIZE FOR SPECIFIC APPLIANCE AND MODEL BEING INSTALLED.
  9. ALL SMOKE ALARMS TO BE LOCATED ON THE CEILING.
  10. CARBON MONOXIDE ALARMS ARE ONLY REQUIRED WHEN HOME HAS EITHER FUEL BURNING APPLIANCES, IS GARAGE READY OR IS BASEMENT READY. REFERENCE DAPA MANUAL FOR ADDITIONAL INFORMATION.
  11. DIMENSIONS SHOWN ON PRINT ARE APPROXIMATE AND TO BE USED ONLY AS A GUIDELINE.

CIRCUIT	CIRCUIT #	WIRE	BREAKER	CIRCUIT	CIRCUIT #	WIRE	BREAKER	CIRCUIT	CIRCUIT #	WIRE	BREAKER
LIGHT/RECP	1A, 3A, 13B, 14A	14-2	15-SP	DRYER	5A, 7B	SEE NOTE #8		BATHROOM	16A	12-2	20-SP
LIGHT/RECP	1B, 3B, 14B	14-2	15-SP	WATER HEATER	4A, 6B	SEE NOTE #8		OPT GDISP	9B	SEE NOTE #8	
KITCHEN	2A, 2B	12-2	20-SP	RANGE	5B, 7A	SEE NOTE #8		OPT SP/L VPLAC	11A, B	SEE NOTE #8	
WASHER	12A	12-2	20-SP	FURNACE	6A, 8A, B, 10A, B	SEE NOTE #8		FREEZER	13A	SEE NOTE #8	
RANGE HOOD	15B	SEE NOTE #8		OPT DWASH	9A	SEE NOTE #8		OPT ELEC FIREPLACE	16B	SEE NOTE #8	
OPT GAS RANG	15A	SEE NOTE #8		SMOKE/CO DET	4B	SEE NOTE #8					
				REFER	12B	SEE NOTE #8					

TRU-1236-11-1.2




APPROVED BY  
  
 4/8/2026  
 FEDERAL MANUFACTURED HOME CONSTRUCTION AND SAFETY STANDARDS

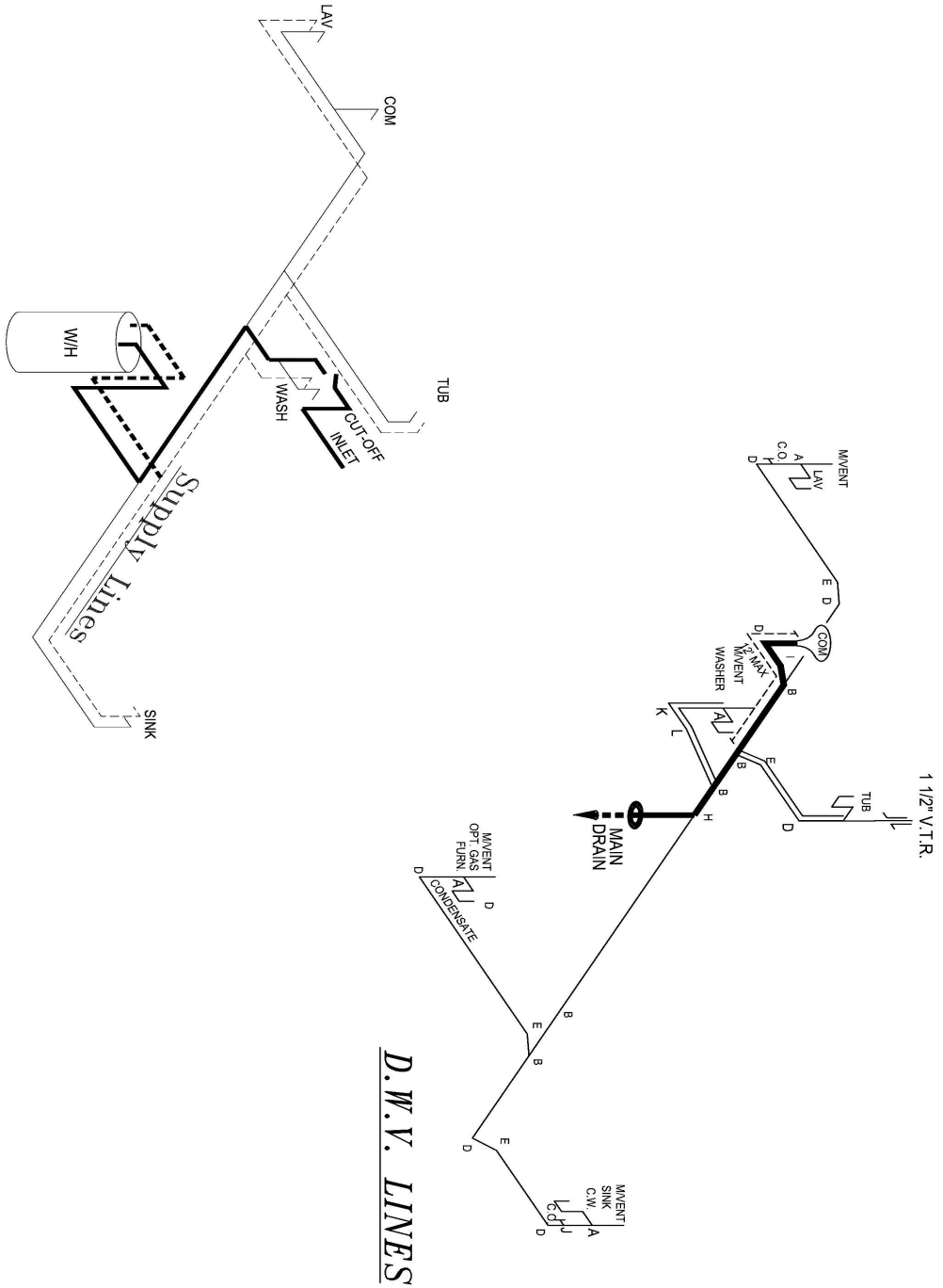
MODEL NAME <b>Buttercup</b>	DATE PRINTED <b>4/6/2026</b>
MODEL NO. <b>TRT12361P</b>	DATE DRAWN <b>2/14/2026</b>
DRAWN BY <b>Jeremy Huiting</b>	SCALE <b>3/16" = 1'</b>
DATE PRINTED <b>4/6/2026</b>	PLANNING <b>TRU-1236-11-1</b>
MODEL SQ. FT. <b>408</b>	SHEET NAME <b>ELEC. PLAN</b>
BOX SIZE <b>12' x 36'</b>	SHEET NO. <b>EL-1.</b>

REVISION	DATE



LEGEND	
A	SHORT TURN T-Y
B	LONG TURN T-Y
C	1/4 BEND
D	LONG SWEEP 1/4 BEND
E	45 ELL
F	DBL. SANITARY TEE
G	4X3 CLOSET ELL
H	DOUBLE ELL
I	22 1/2° ELL
J	45° Y
K	LONG TURN STREET ELBOW
L	45 FTG ELL

DWV LINE SIZE CHART	
	= 3"
	= 2"
	= 1 1/2"



NOTE:  
 DASHED LINES INDICATE HOT WATER  
 SOLID LINES INDICATE COLD WATER



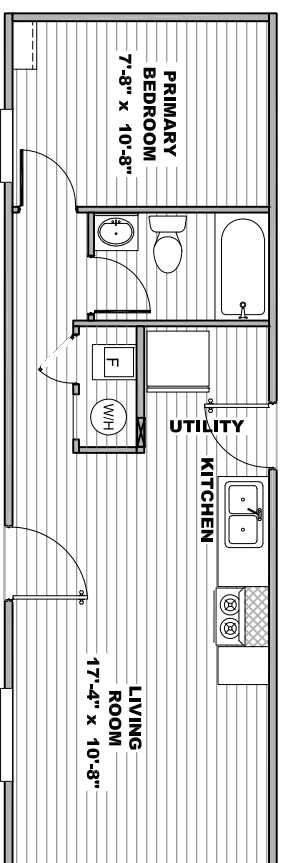
TRU-1236-11-1.3

APPROVED BY  
  
 REVISION  
 4/8/2026  
 FEDERAL MANUFACTURED HOME  
 CONSTRUCTION AND SAFETY STANDARDS

MODEL NAME <b>Buttercup</b>	DATE
MODEL NO. <b>TRT12361P</b>	
BOX SIZE <b>12' x 36'</b>	MODEL SQ. FT. <b>408</b>
DRAWN BY <b>Jeremy Huiting</b>	REVISION
DATE DRAWN <b>2/14/2026</b>	
DATE PRINTED <b>4/6/2026</b>	
SCALE <b>3/16" = 1'</b>	
PLAN NO. <b>TRU-1236-11-1</b>	
SHEET NAME <b>D.W.V. &amp; SUPPLY</b>	
SHEET NO. <b>PL-1.</b>	



# "12 x 36 Buttercup"

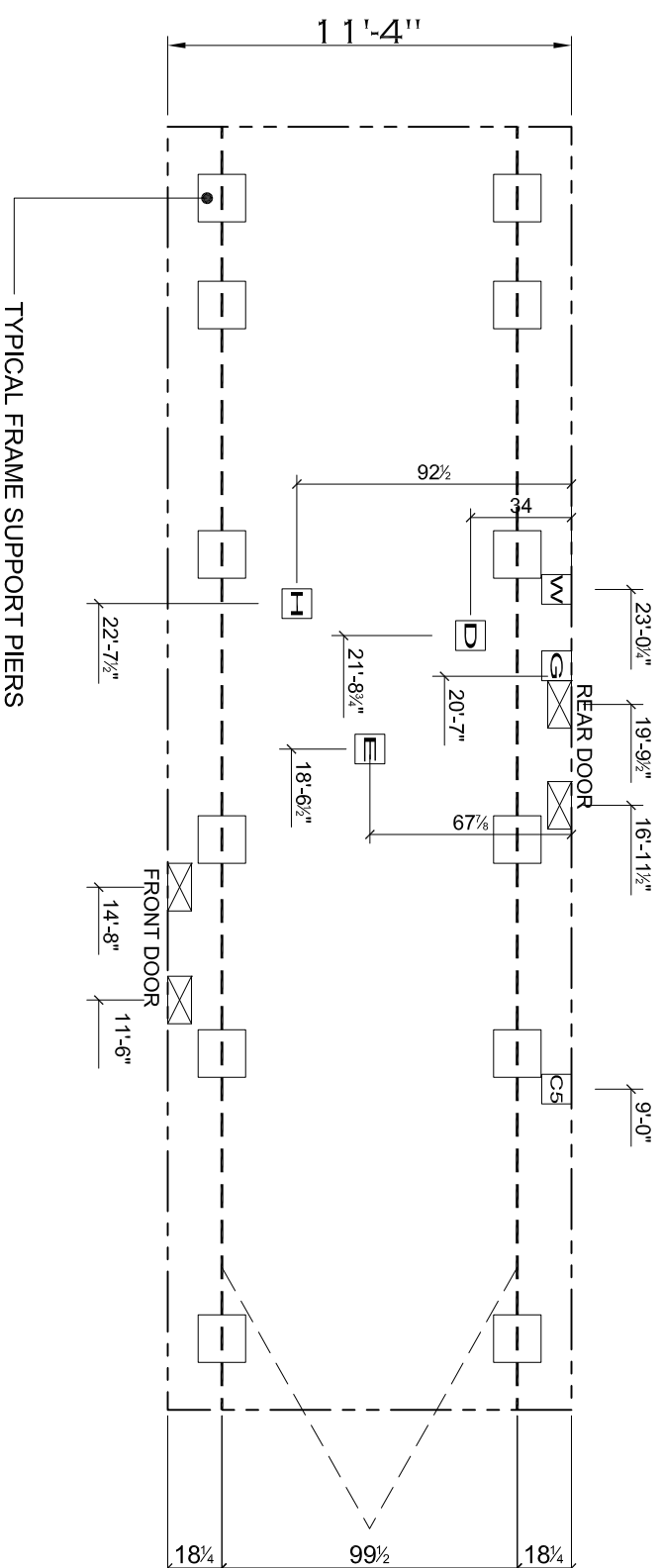


MODEL #TRT12361A SQ.FT. 408

DRAWING # TRU-1236-11-1

20 lb ROOF LOAD SIDEWALL OPENING PIER LOAD 14' BOX WIDTH	SIDEWALL OPENING (FT)				
	REQUIRED PIER LOAD (LBS)				
3	4	5	6	8	10
1175	1330	1485	1640	1950	2260

\*FOR 30 lb & 40 lb ROOF LOAD REFER TO TABLES 7 & 7a IN THE INSTALLATION MANUAL.



**NOTES:**

- REFER TO TABLES 6 AND 6a IN THE INSTALLATION MANUAL FOR LOAD ON FRAME PIER FOOTINGS FOR HOMES THAT DO NOT REQUIRE PERIMETER BLOCKING. REFER TO TABLES 7 AND 7a IN THE INSTALLATION MANUAL FOR LOAD ON FRAME PIER FOOTINGS FOR HOMES THAT REQUIRE PERIMETER BLOCKING. REFER TO TABLES 10 AND 10a TO DETERMINE FOOTING SIZE FOR ALL PIERS.
- REFER TO TABLE 9 FOR PIER CONFIGURATION AND MAXIMUM ALLOWABLE HEIGHTS. CROSS REFERENCE THE PIER HEIGHT WITH THE MAXIMUM ALLOWABLE FLOOR HEIGHT LISTED IN THE FRAME TIEDOWN CHARTS (TABLE 18, 19, AND 20).
- THE MAXIMUM SPACING FOR FRAME SUPPORT PIERS FOR 8" I-BEAMS IS 8 FEET, 10" & 12" I-BEAMS IS 10 FEET.
- SERVICE DROP LOCATIONS IDENTIFIED ARE APPROXIMATE.
- FLOOR WIDTH SHOWN IS FOR STANDARD PRODUCT ONLY. CONTACT THE MFG FACILITY FOR SPECIFICATIONS OF OPTIONS ORDERED.

**SERVICE DROP LEGEND**

- E** = ELECTRICAL DROP
- W** = WATER INLET
- D** = DWV/PLUMBING DROP
- G** = GAS INLET
- H** = HVAC DROP
- CS** = COMMUNICATIONS DROP
- EX** = ELECTRICAL CROSSOVER
- WX** = WATER CROSSOVER
- HX** = HVAC CROSSOVER

**PIER LEGEND**

- = PIER MAIN BEAM
- = PIER PERIMETER
- = PIER PORCH/RECESSED ENTRY



REVISION	DATE

MODEL NAME <b>Buttercup</b>	
MODEL NO. <b>TRT12361P</b>	
BOX SIZE <b>12' x 36'</b>	MODEL SQ. FT. <b>408</b>

DRAWN BY  
**Jeremy Huiting**

DATE DRAWN  
**2/14/2026**

DATE PRINTED  
**4/9/2026**

SCALE  
**3/16"=1'**

PLANT NO.  
**TRU-1236-11-1**

SHEET NAME  
**PIERS**

SHEET NO.  
**SU-1.**